

Série VY Aplicações Extremas

Válvulas direcionais 3/2, 5/2 e 5/3 com atuações, elétricas e pneumáticas. São ofertadas nas bitolas 1/4", 3/8" e 1/2", com variedade de matéria-prima dos componentes para atendimento às mais variadas aplicações ambientes ou fluidos.

PRESSÃO MÁXIMA: 2,0 a 9,0 bar (monoestável).
1,0 a 9,0 bar (biestável).
vácuo à 12,0 bar (piloto externo).

TEMPERATURA: -10°C à +80°C (Buna-N)
-10°C à +150°C (Viton)

FLUÍDO: Ar filtrado e lubrificado.

LUBRIFICAÇÃO: ISO8 ou ISO10.

VAZÃO: 1600 l/min (1/4"), 2200 l/min (3/8") e 4200 l/min (1/2").

MATERIAL: Componentes internos: Aço Inox, Tecnopolímero, Latão, alumínio.
Componentes externos: conforme configuração.

TIPO CONSTRUTIVO: Spool (universal).

CONECTOR: DIN 43650 Forma B.

CICLAGEM MÁXIMA: 60 ciclos/min.

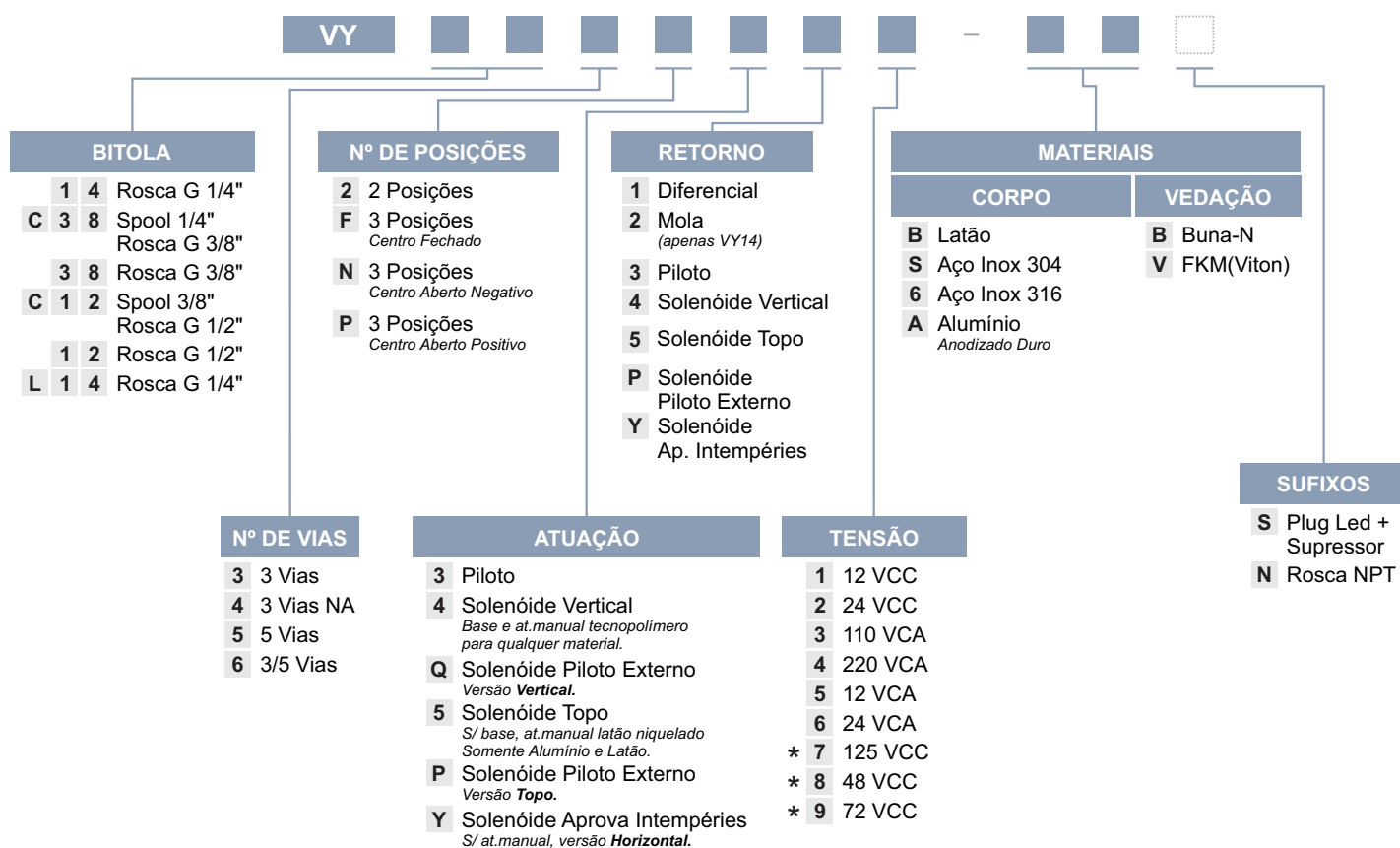
CONEXÕES: Vide dimensional.

MONTAGEM: Em linha e/ou por furos laterais em qualquer posição.

SIMBOLOGIA: Vide dimensional.



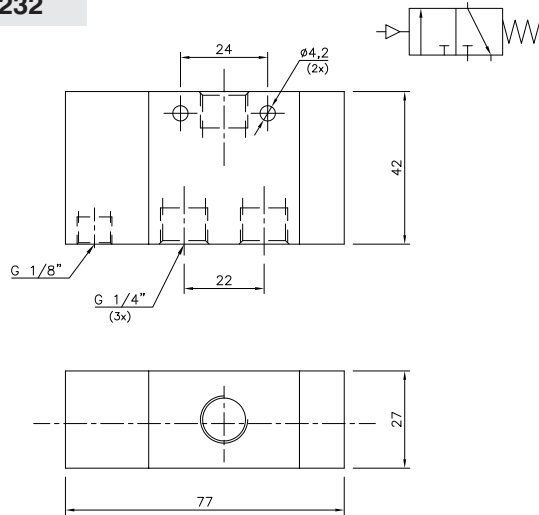
CODIFICAÇÃO



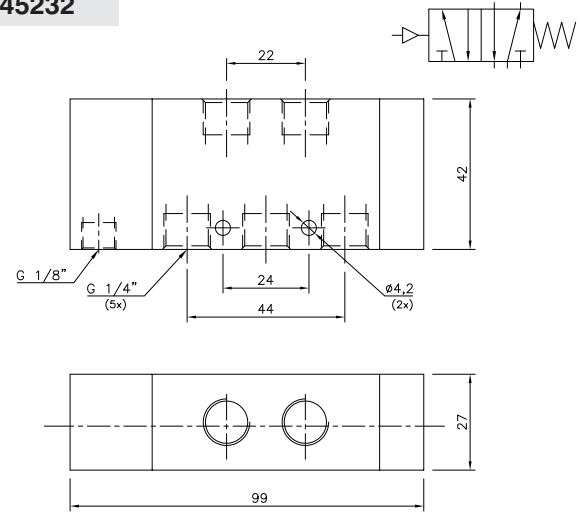
NOTAS: ■ Seleção Standard
* Sob Consulta

DIMENSIONAL

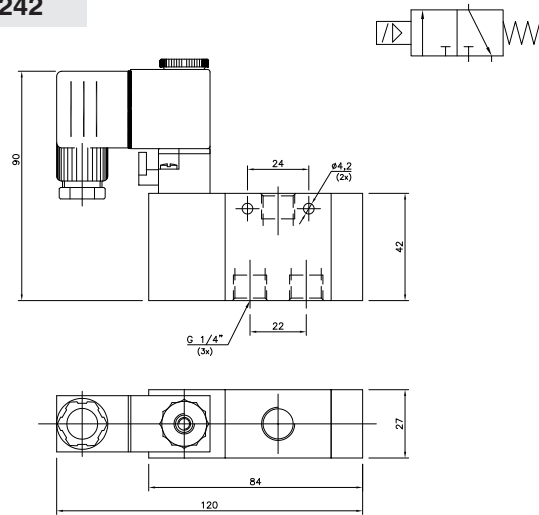
VY143232



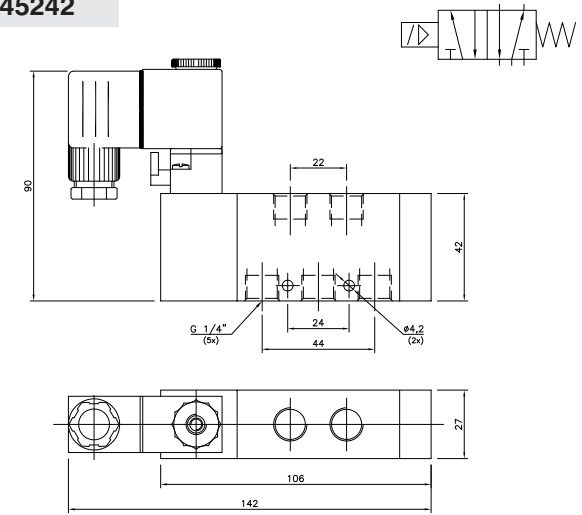
VY145232



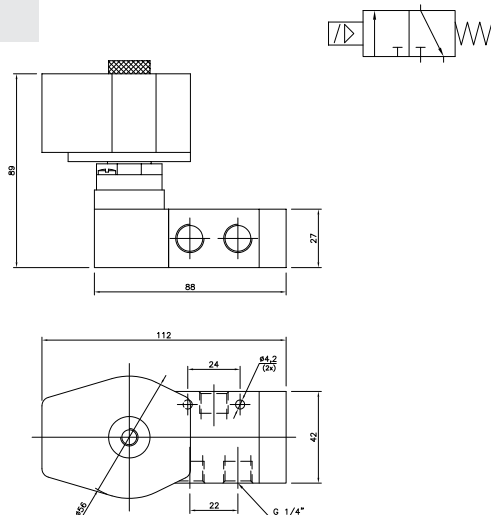
VY143242



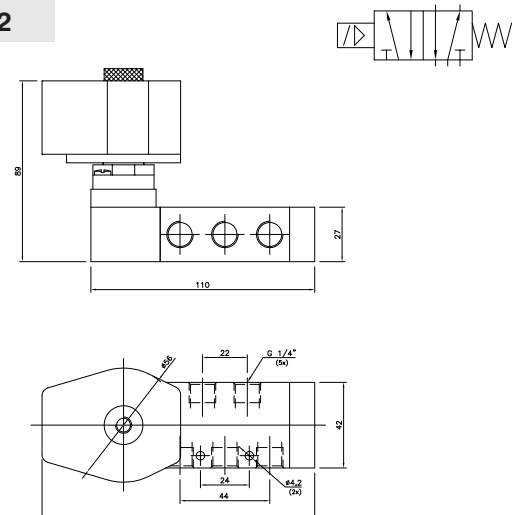
VY145242



VY1432Y2

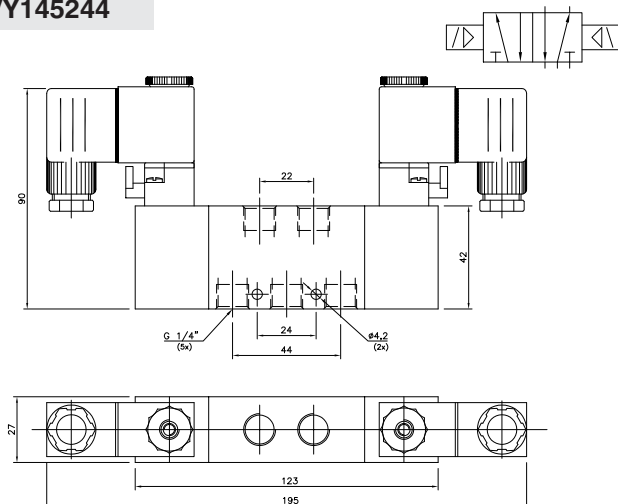


VY1452Y2

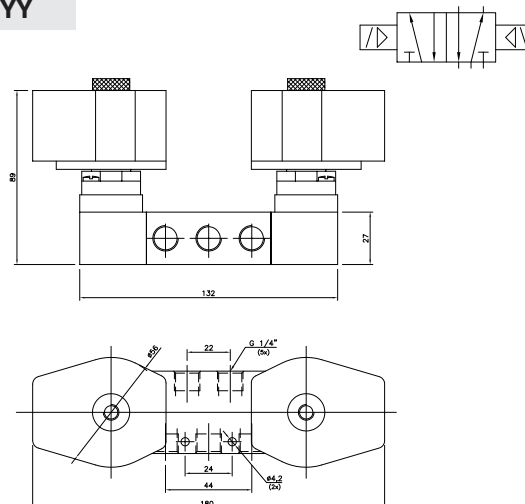


DIMENSIONAL

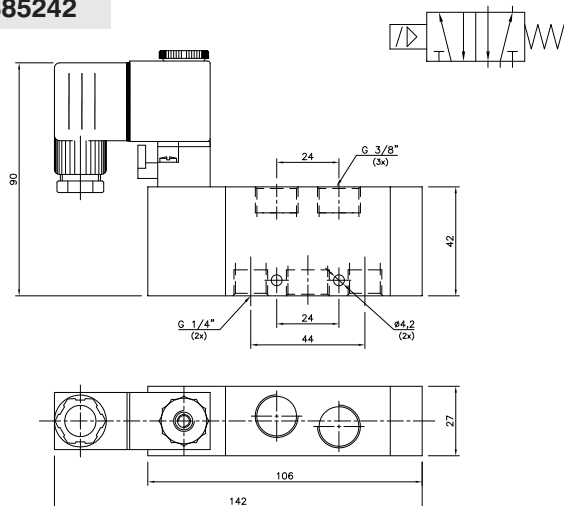
VY145244



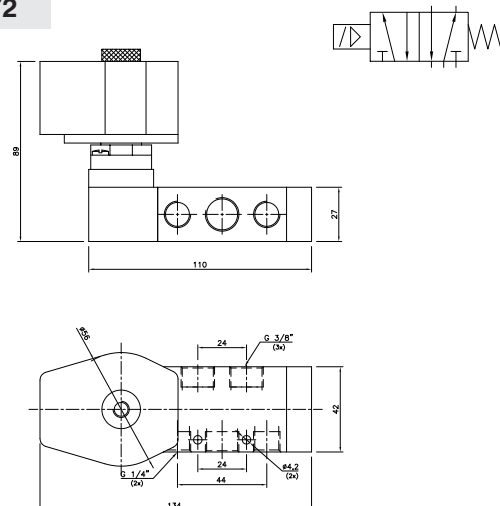
VY1452YY



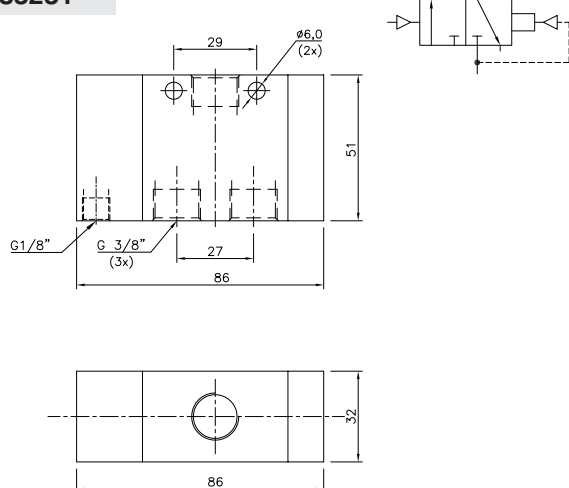
VYC385242



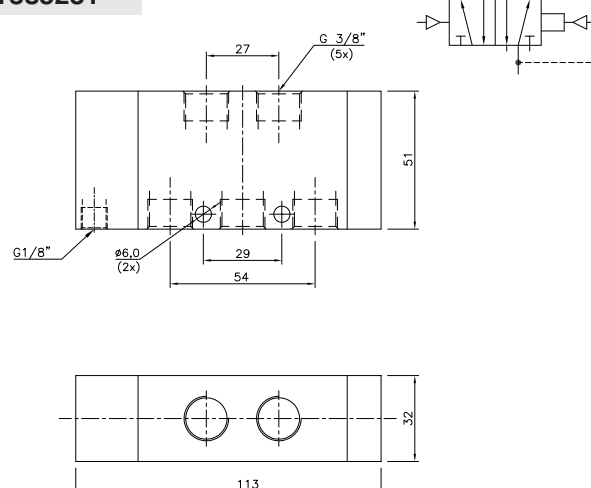
VYC3852Y2



VY383231

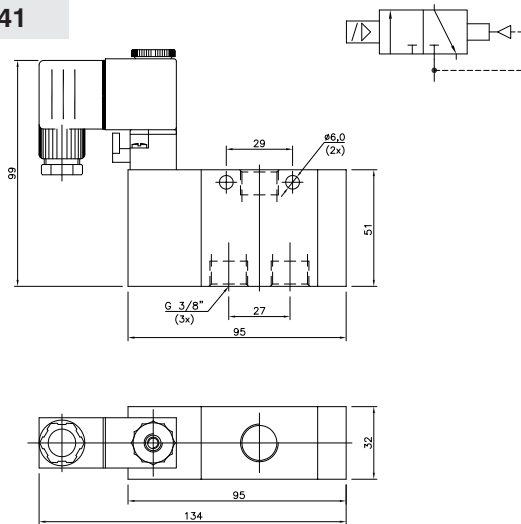


VY385231

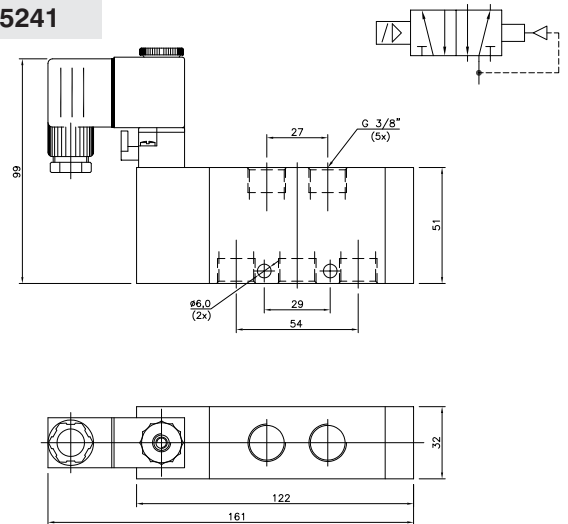


DIMENSIONAL

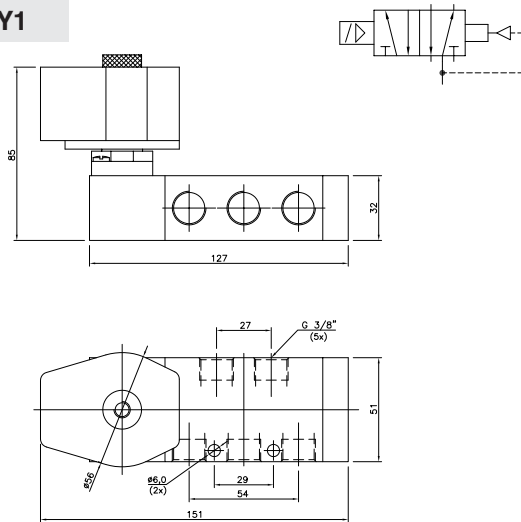
VY383241



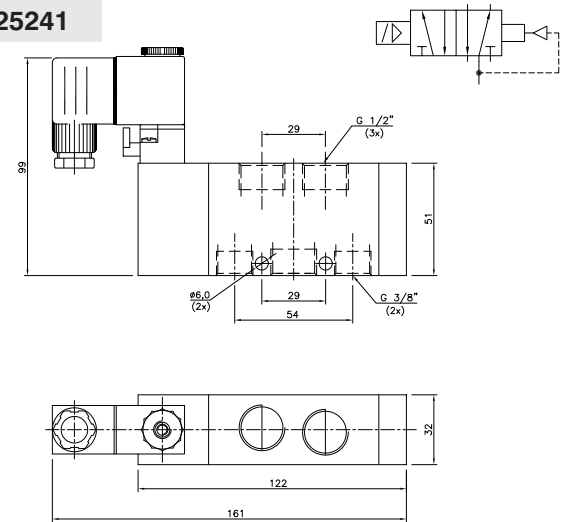
VY385241



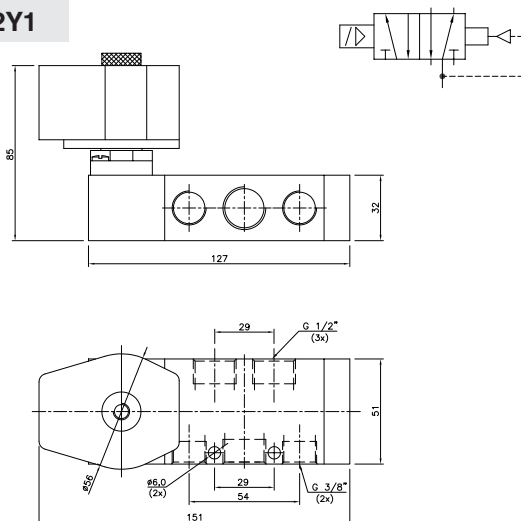
VY3852Y1



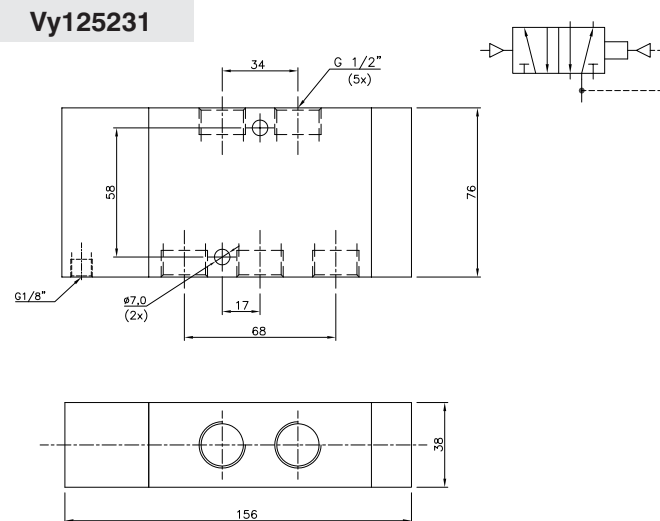
VYC125241



VYC1252Y1



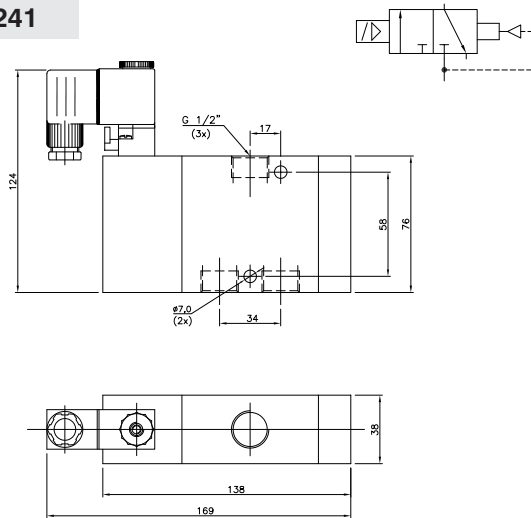
Vy125231



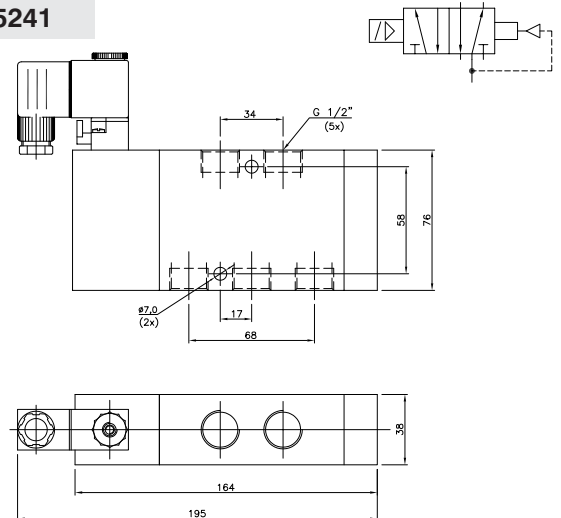
Série VY Aplicações Extremas

DIMENSIONAL

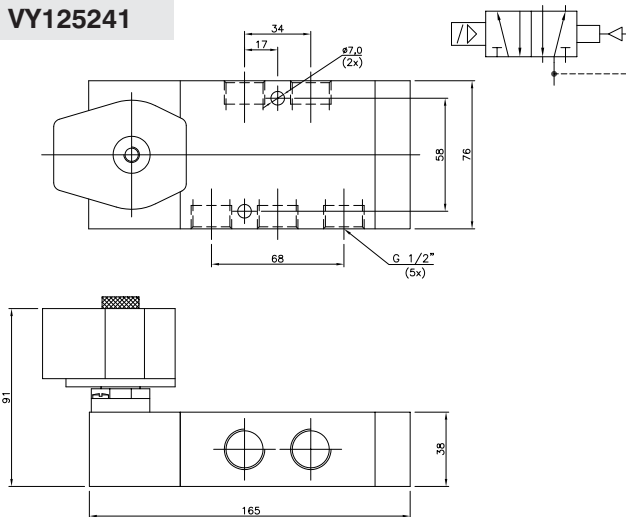
VY125241



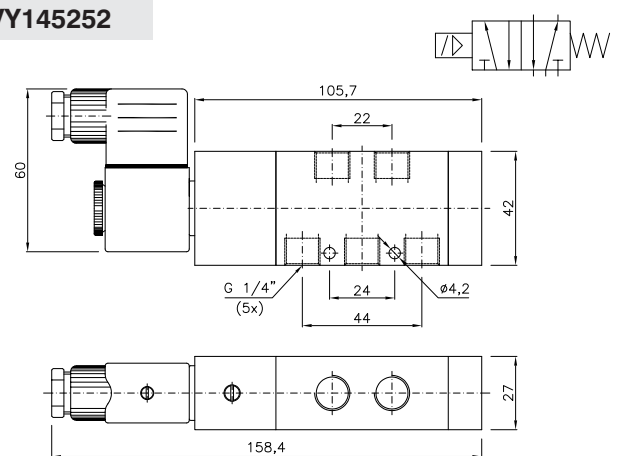
VY125241



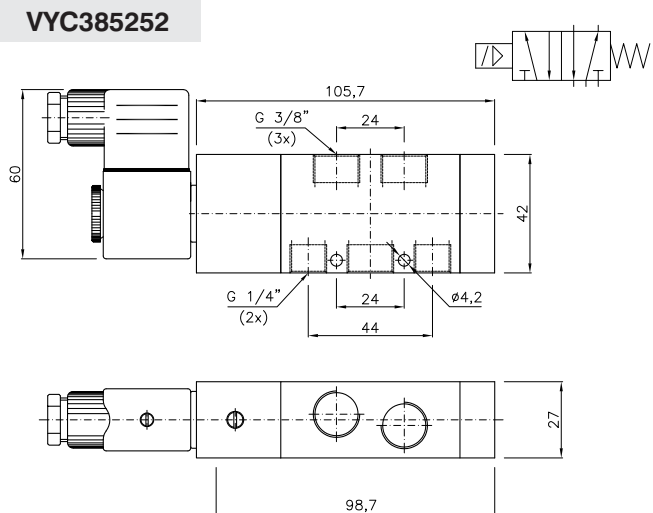
VY125241



VY145252



VYC385252



VY385251

